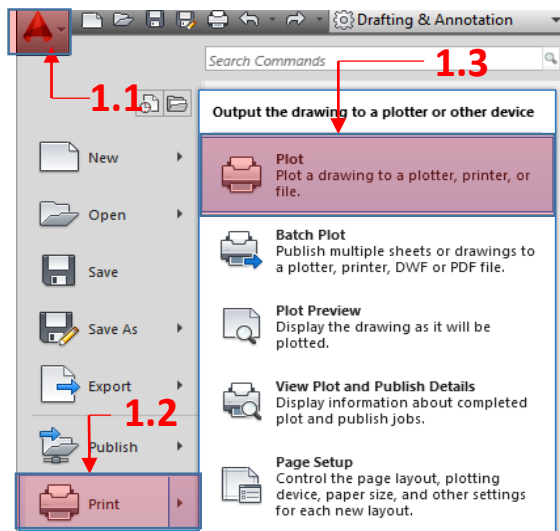




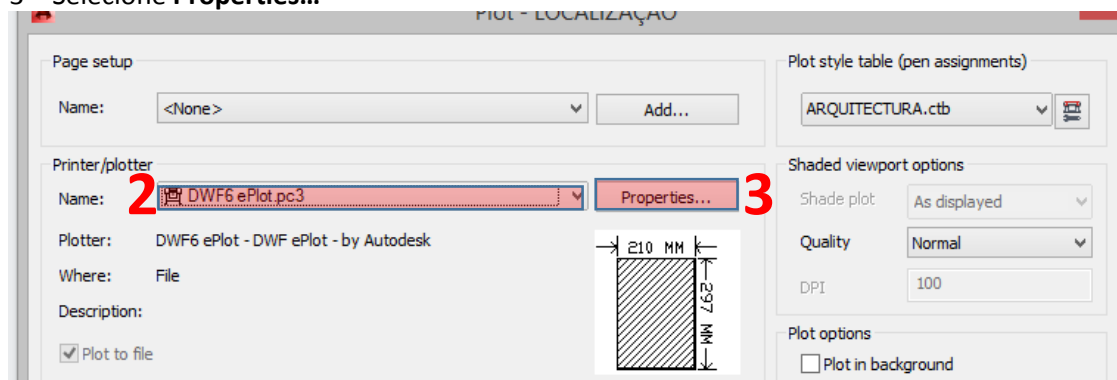
CRIAR DWF'S COM LAYER'S ATIVAS

1 – Clique em 1.1 Menu, 1.2 Print, 1.3 Plot



2 - Escolher a Impressora **DWF6 ePlot.pc3**

3 – Selecione **Properties...**



4 – Selecione a opção 4.1 Custom Properties, 4.2 Custom Properties ...

5 – Selecione **Include layer information**

